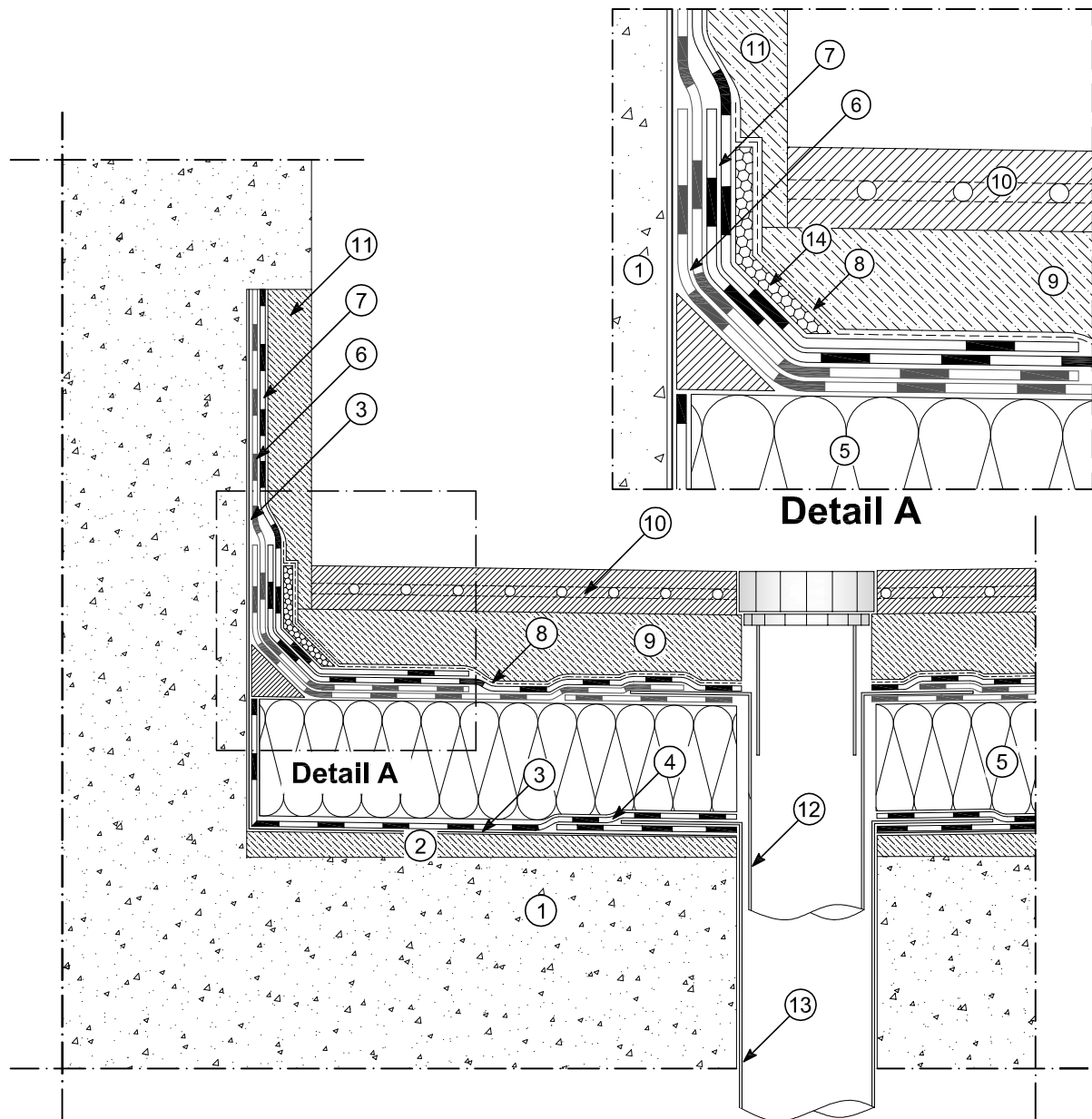


Drawing B-1004

Insulated roofing with industrial floor



- | | |
|--|--|
| ① Structure | ⑧ Double separation layer |
| ② Concrete gradient screed | ⑨ Protective screed |
| ③ Bituminous primer POLYPRIMER HP 45 PRO | ⑩ Industrial floor |
| ④ Vapour barrier | ⑪ Vertical turn-up protected with screen and plaster |
| ⑤ Insulation panel | ⑫ Outlet in 20/10 lead |
| ⑥ Bituminous membrane (1st layer) | ⑬ Outlet in 8/10 stainless steel |
| ⑦ Bituminous membrane (2nd layer) | ⑭ Shock absorber |

05.03.2012

reproduction prohibited
without cite the source