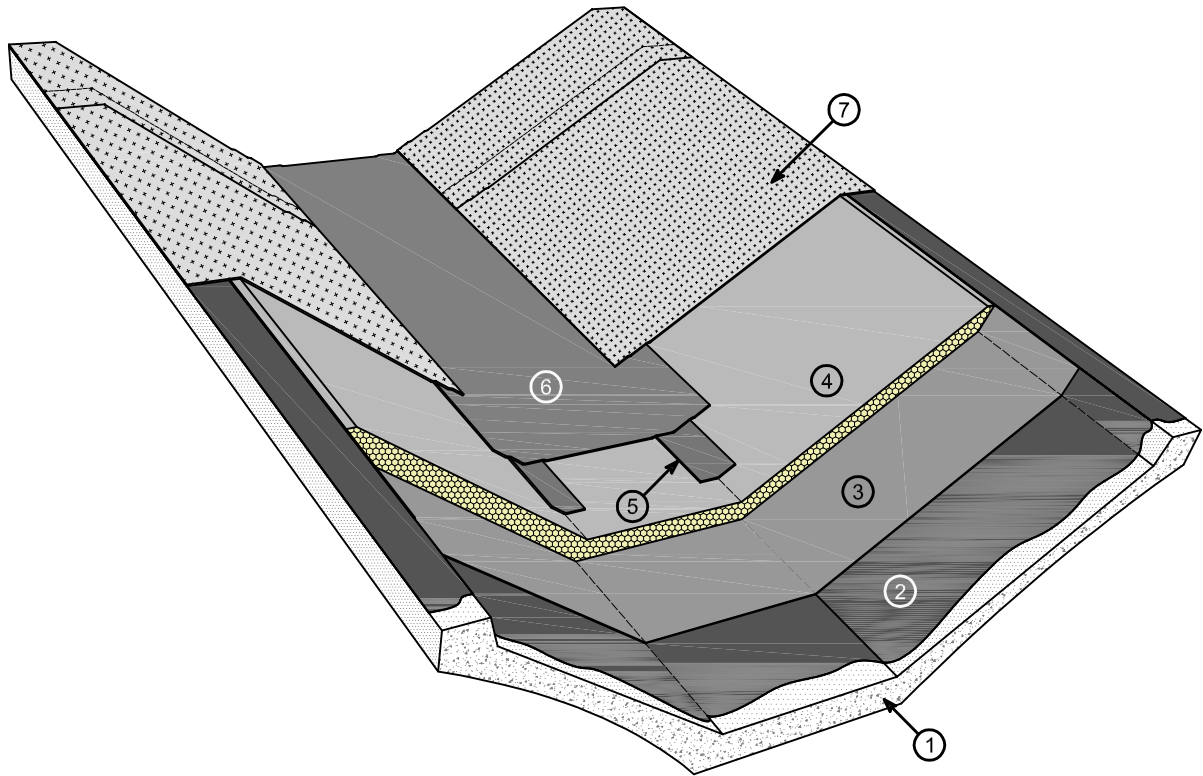


Drawing B-0702

Waterproofing and insulated system

Precast element



- | | |
|---|--|
| ① Precast element | ⑤ Reinforcing strip with bituminous membrane |
| ② Bituminous primer POLYPRIMER HP 45 PRO | ⑥ Bituminous membrane without mineral surface *1 |
| ③ Vapour barrier | ⑦ Mineral bituminous membrane |
| ④ POLYSOL IPO system +
bituminous membrane | |

*1 The exposed bituminous membrane must be covered by a protective reflective paint, type: POLYVER ACRIL, POLYVER S or POLYVER ALU
(see the Special Products catalogue)

14.03.2012

reproduction prohibited
without cite the source