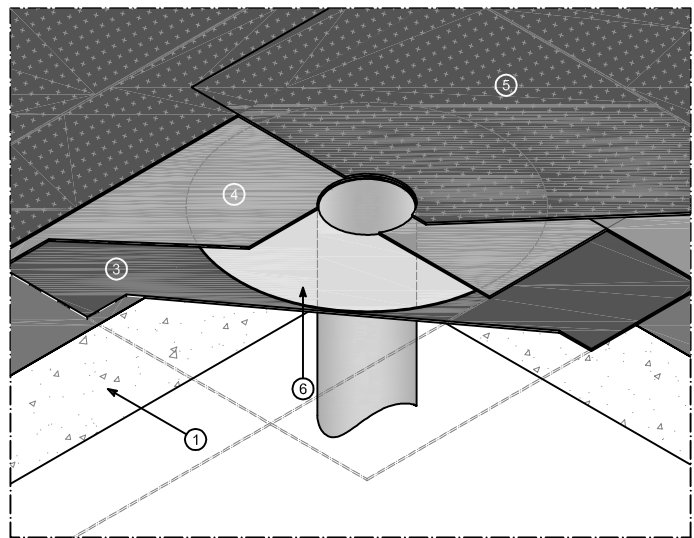
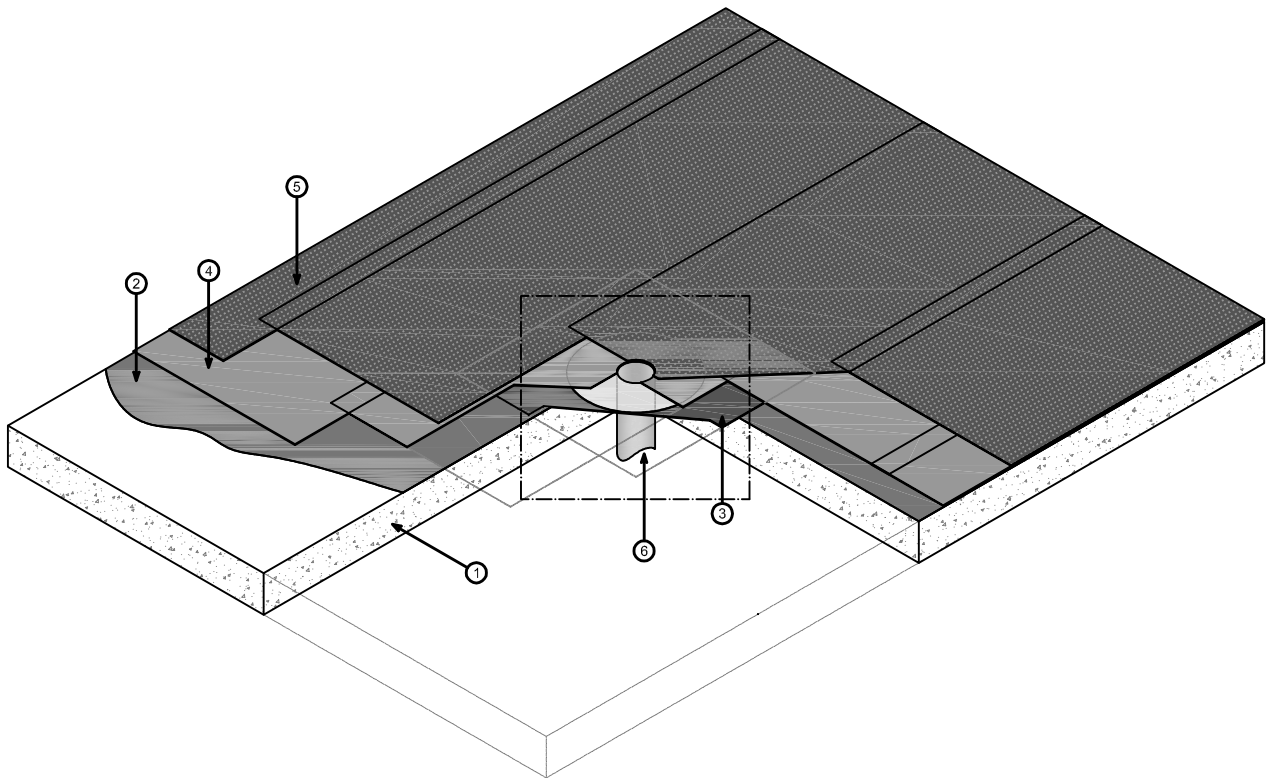


Drawing B-0701 Outlet



- ① Structure
- ② Bituminous primer POLYPRIMER HP 45 PRO
- ③ Protection bituminous membrane
- ④ Bituminous membrane (1st layer)
- ⑤ Bituminous membrane (2nd layer) *1
- ⑥ Outlet in 20/10 lead or copper

*1 The exposed bituminous membrane must be covered by slate, or covered by a protective reflective paint, type: POLYVER ACRIL, POLYVER S or POLYVER ALU (see the Special Products catalogue)

14.03.2012

POLYGLASS SpA - MAPEI GROUP - Registered Office: Viale E. Jenner, 4 20159 Milano
Head Office: via Dell'Artigianato, 34 31047 Ponte di Piave (TV)
tel. +39 04227547 - fax +39 0422854118 - www.polyglass.com e-mail: info@polyglass.it

reproduction prohibited
without cite the source