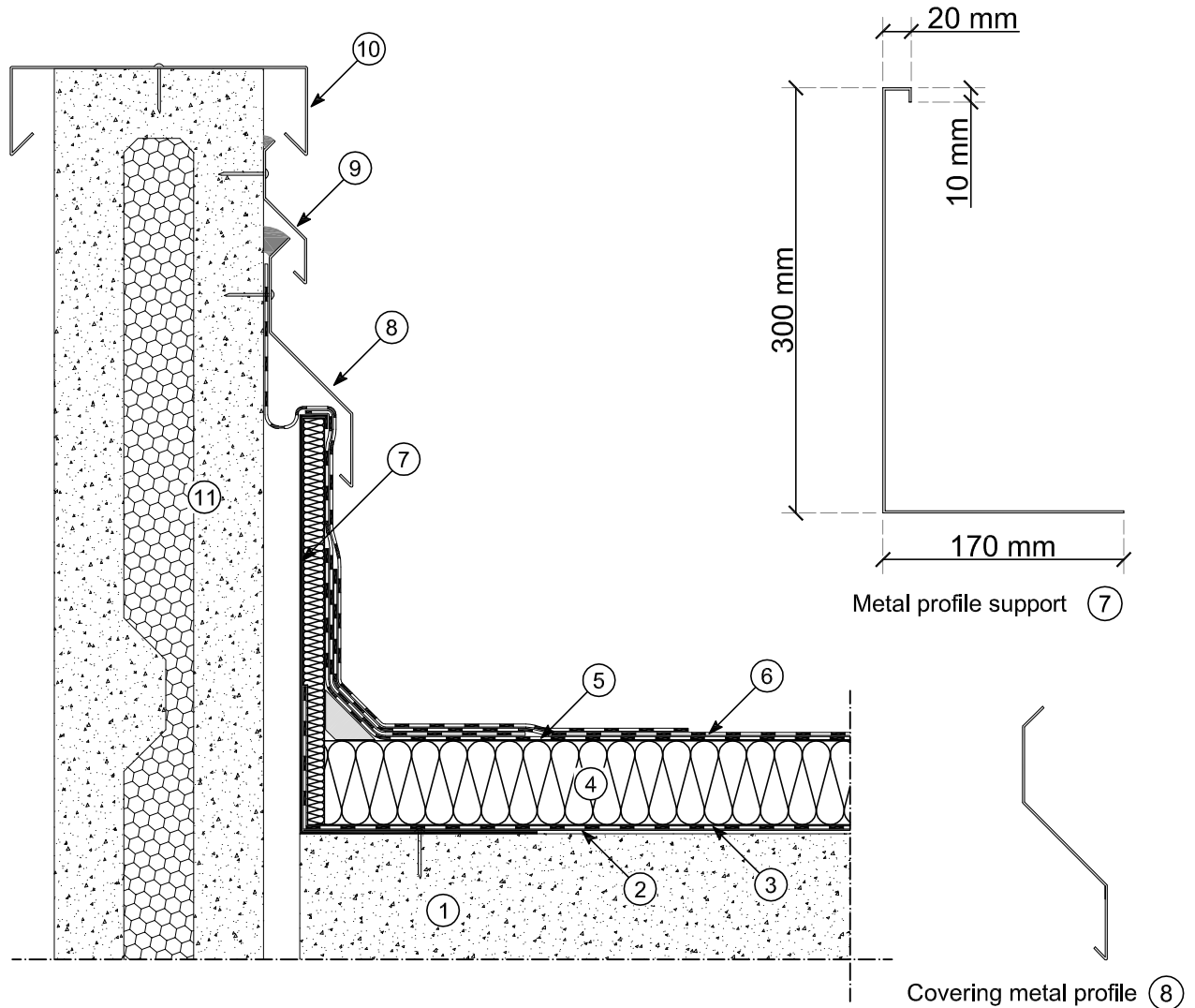
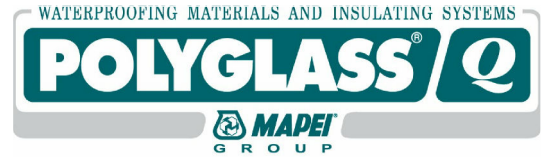


Drawing B-0600

Precast element

Connection from structural precast element and precast cladding panel



- | | |
|--|--|
| ① Structure | ⑦ Metal profile support |
| ② Bituminous primer POLYPRIMER HP 45 PRO | ⑧ Covering metal profile for joint expansion |
| ③ Vapour barrier | ⑨ Protective metal profile |
| ④ Insulation panel | ⑩ Perimeter metal profile |
| ⑤ Bituminous membrane (1st layer) | ⑪ Precast cladding panel |
| ⑥ Bituminous membrane (2nd layer)*1 | |

*1 The exposed bituminous membrane must be covered by slate, or covered by a protective reflective paint, type: POLYVER ACRIL, POLYVER S or POLYVER ALU (see the Special Products catalogue)

05.03.2012

reproduction prohibited
without cite the source

POLYGLASS SpA - MAPEI GROUP - Registered Office: Viale E. Jenner, 4 20159 Milano
Head Office: via Dell'Artigianato, 34 31047 Ponte di Piave (TV)
tel. +39 04227547 - fax +39 0422854118 - www.polyglass.com e-mail: info@polyglass.it