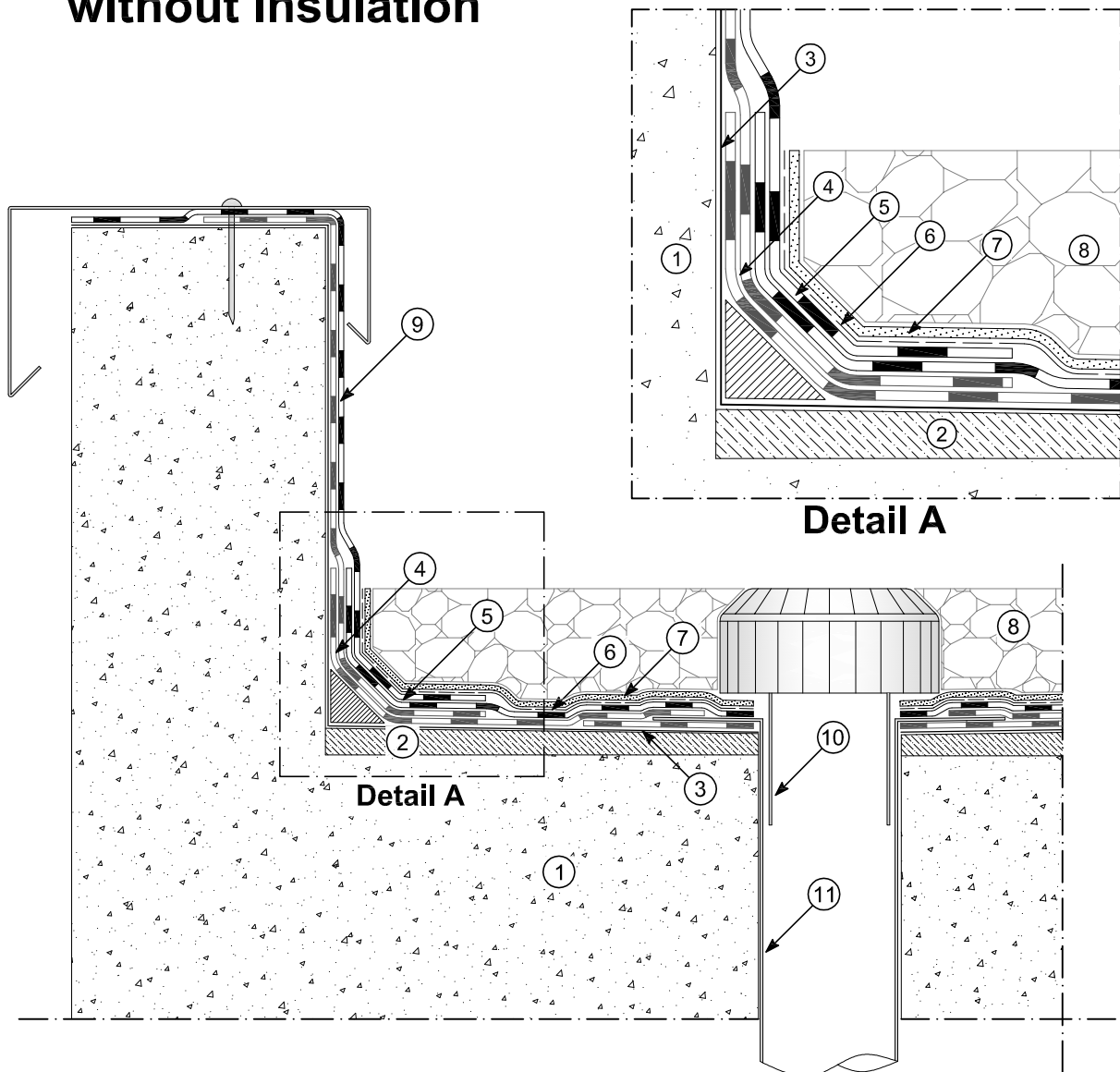


Drawing B-1010

Non-walkable roofing without insulation



- | | |
|------------------------------------------|------------------------------------------|
| ① Structure | ⑦ Non-woven fabric filtration layer |
| ② Concrete gradient screed | ⑧ Protective layer with gravel |
| ③ Bituminous primer POLYPRIMER HP 45 PRO | ⑨ Vertical turn-up with mineral membrane |
| ④ Bituminous membrane (1st layer) | ⑩ Outlet in 20/10 lead |
| ⑤ Bituminous membrane (2nd layer) | ⑪ Outlet in 8/10 stainless steel |
| ⑥ Polyethylene separation layer | |