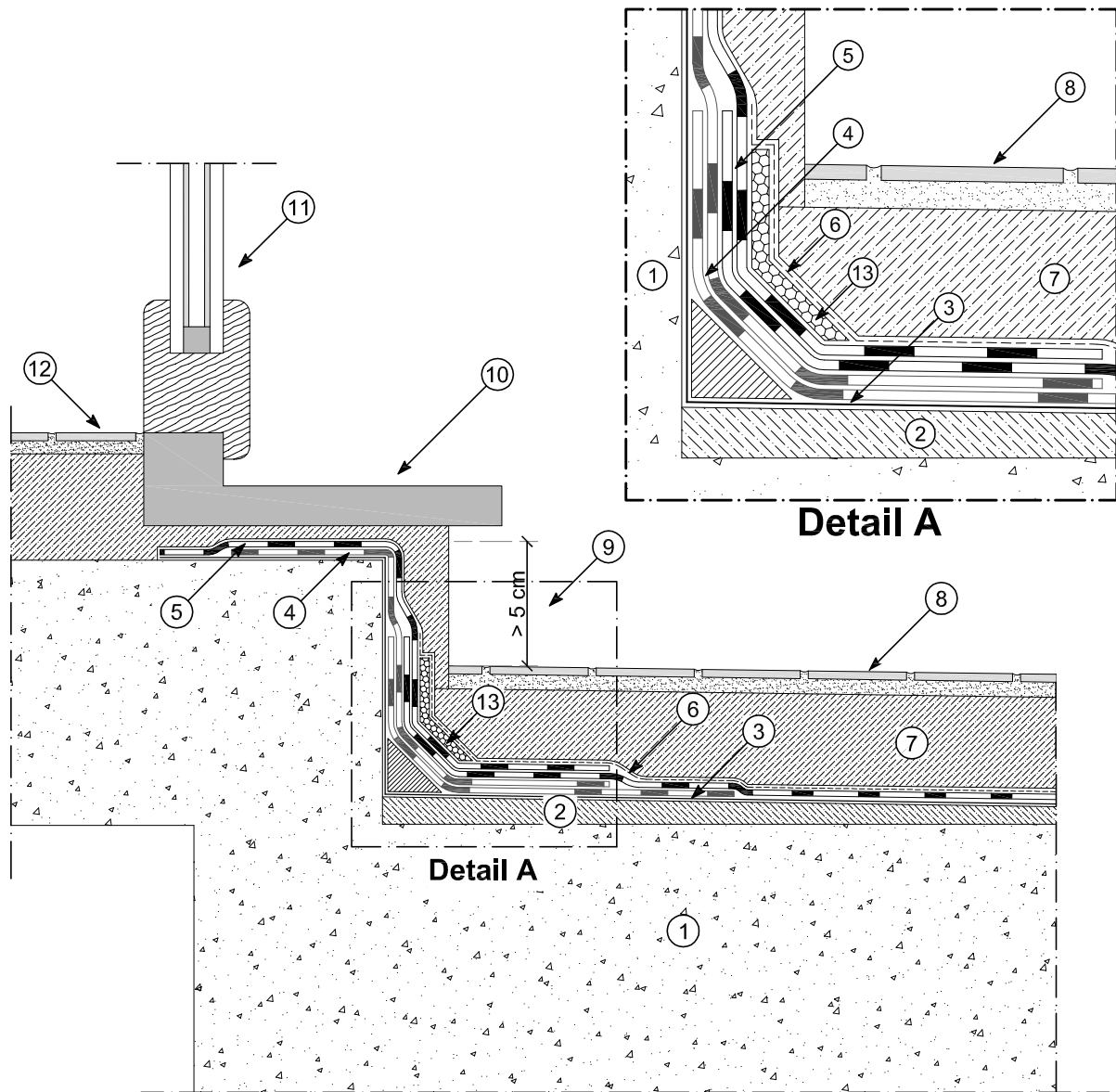


# Drawing B-1008

## Non-insulated roofing with tile floor



- |  |                                      |
|--|--------------------------------------|
| ① Structure                              | ⑧ Tile floor                         |
| ② Concrete gradient screed               | ⑨ Minimum water containment distance |
| ③ Bituminous primer POLYPRIMER HP 45 PRO | ⑩ Threshold                          |
| ④ Bituminous membrane (1st layer)        | ⑪ Balcony contact point              |
| ⑤ Bituminous membrane (2nd layer)        | ⑫ Indoor tile flooring               |
| ⑥ Double separation layer                | ⑬ Shock absorber                     |
| ⑦ Protective screed                      |                                      |

05.03.2012

reproduction prohibited  
without cite the source