

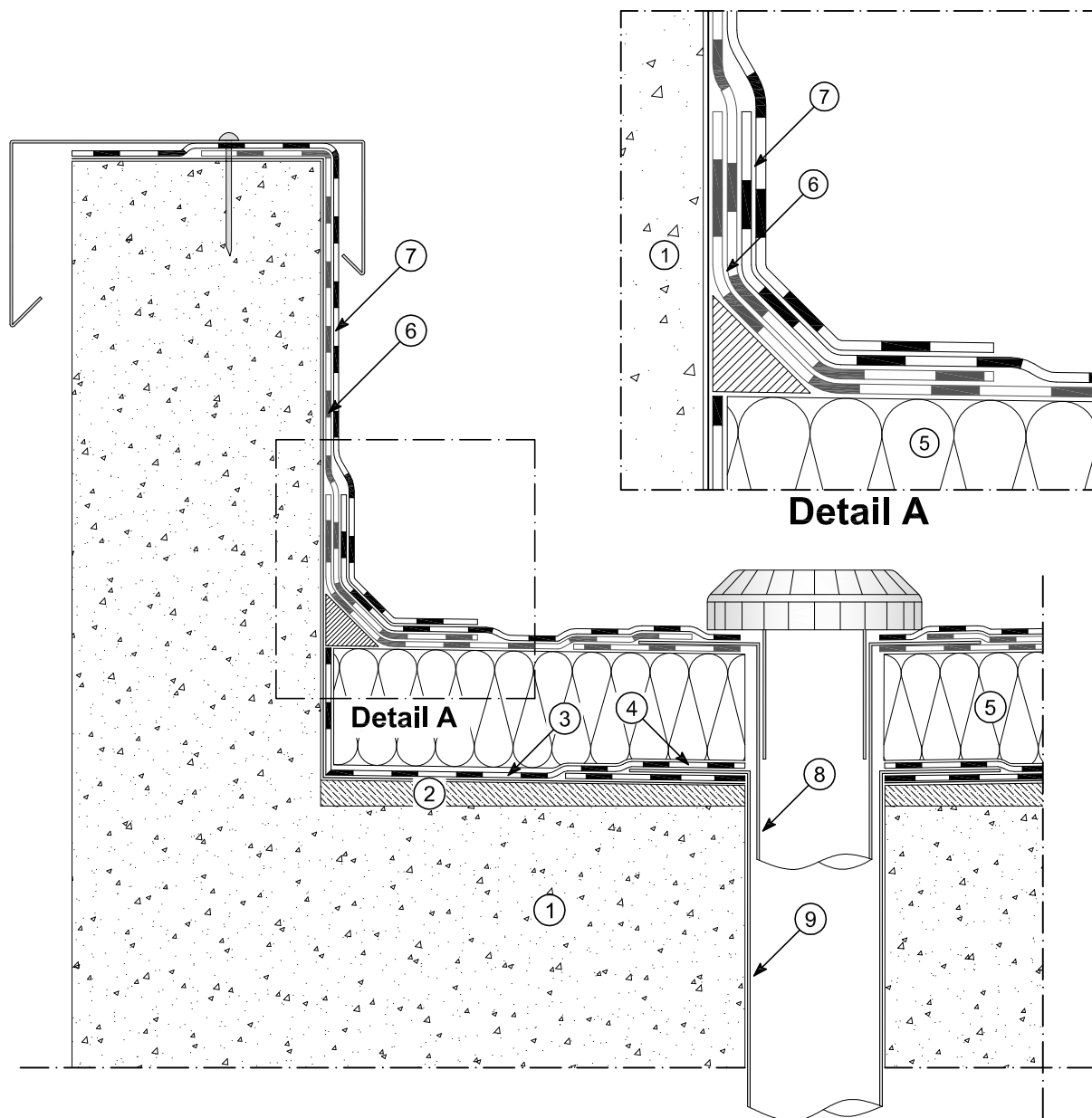
Drawing B-1002

Insulated exposed roofing

WATERPROOFING MATERIALS AND INSULATING SYSTEMS

POLYGLASS® Q

MAPEI
GROUP



- | | |
|--|---|
| ① Structure | ⑥ Bituminous membrane (1st layer) |
| ② Concrete gradient screed | ⑦ Bituminous membrane (2nd layer) *1 |
| ③ Bituminous primer POLYPRIMER HP 45 PRO | ⑧ Outlet in 20/10 lead for waterproofing layer |
| ④ Vapour barrier | ⑨ Outlet in 8/10 stainless steel (vapour barrier) |
| ⑤ Insulation panel | |

*1 The exposed bituminous membrane must be covered by slate, or covered by a protective reflective paint, type: POLYVER ACRIL, POLYVER S or POLYVER ALU (see the Special Products catalogue)

14.03.2012

reproduction prohibited
without cite the source

POLYGLASS SpA - MAPEI GROUP - Registered Office: Viale E. Jenner, 4 20159 Milano
Head Office: via Dell'Artigianato, 34 31047 Ponte di Piave (TV)
tel. +39 04227547 - fax +39 0422854118 - www.polyglass.com e-mail: info@polyglass.it