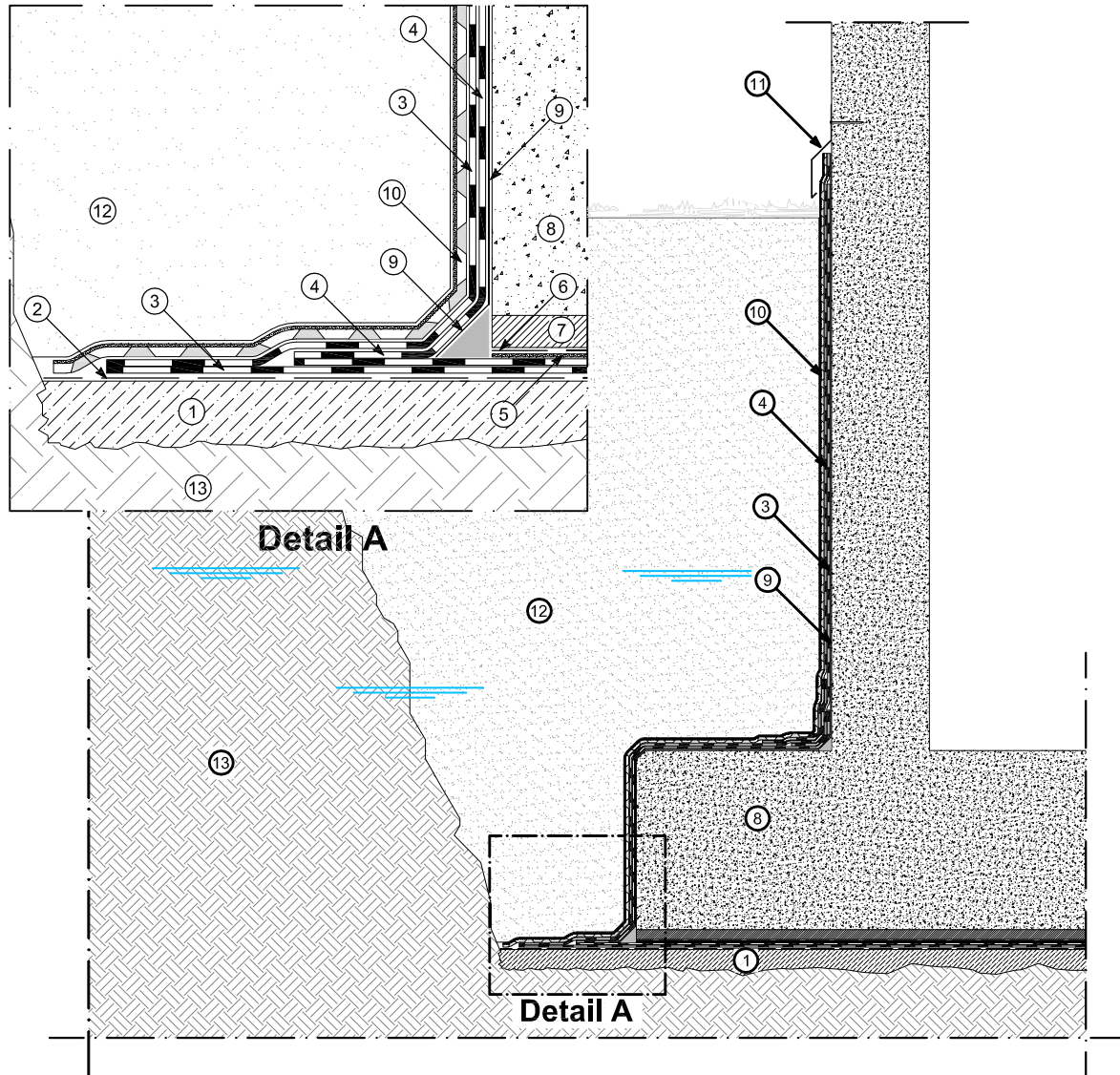


# Drawing B-0901

## Waterproofing system under groundwater



- |  |  |
|--|--|
| ① Lean concrete                          | ⑧ Foundation slab                                  |
| ② Slip layer with calendered bituminized | ⑨ Bituminous primer POLYPRIMER HP 45 PRO           |
| ③ Waterproofing membrane (1st layer)     | ⑩ Drainage and protection layer POLYFOND KIT DRAIN |
| ④ Waterproofing membrane (2nd layer)     | ⑪ Stainless steel profile                          |
| ⑤ Protection layer with non-woven fabric | ⑫ Refill   |
| ⑥ Polyethylene separation layer          | ⑬ Soil   |
| ⑦ Protective screed                      |  |

05.03.2012

reproduction prohibited  
without cite the source