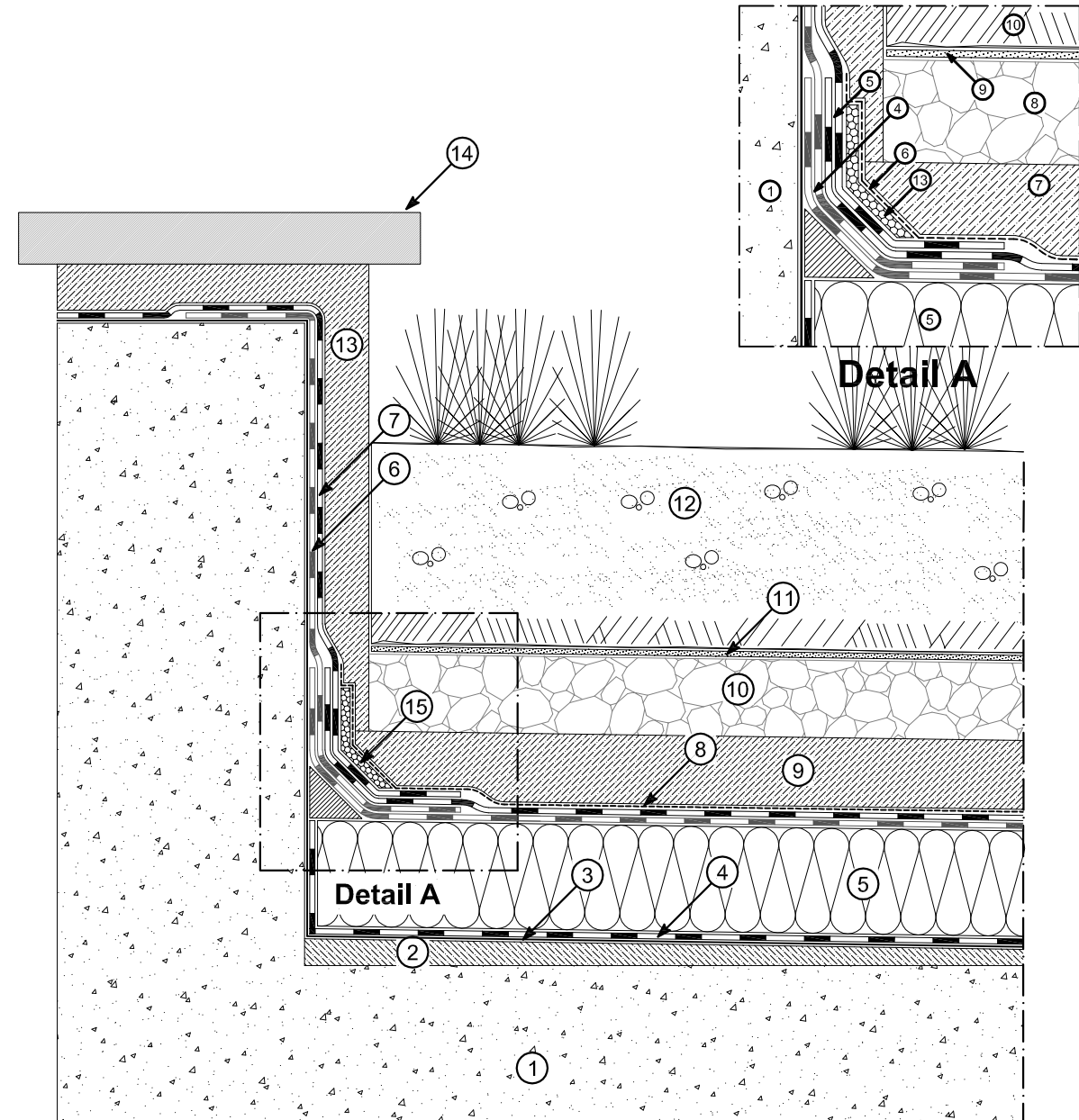


# Drawing B-1014

## Insulated roof garden



- |  |  |
|--|--|
| ① Structure                              | ⑨ Protective screed                                  |
| ② Concrete gradient screed               | ⑩ Gravel drainage layer                              |
| ③ Bituminous primer POLYPRIMER HP 45 PRO | ⑪ Non-woven fabric drainage layer                    |
| ④ Vapour barrier                         | ⑫ Soil   |
| ⑤ Insulation panel                       | ⑬ Vertical turn-up protected with screen and plaster |
| ⑥ Bituminous membrane (1st layer)        | ⑭ Finishing element                                  |
| ⑦ Bituminous membrane (2nd layer)        | ⑮ Shock absorber                                     |
| ⑧ Double separation layer                |  |

05.03.2012

reproduction prohibited  
without cite the source