

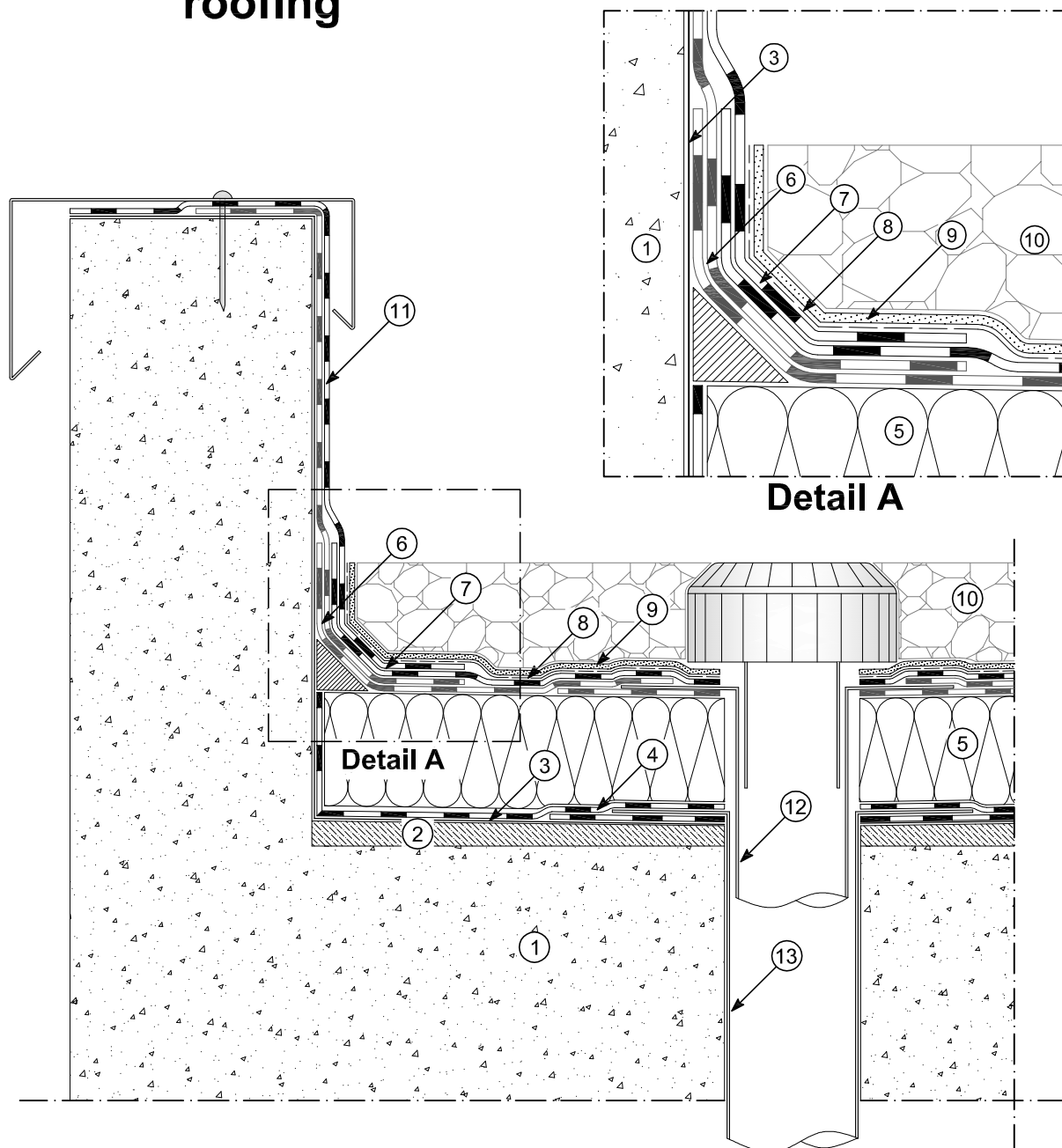
Drawing B-1011

Insulated non-walkable roofing

WATERPROOFING MATERIALS AND INSULATING SYSTEMS

POLYGLASS® Q

MAPEI
GROUP



- | | |
|--|--|
| ① Structure | ⑧ Polyethylene separation layer |
| ② Concrete gradient screed | ⑨ Non-woven fabric filtration layer |
| ③ Bituminous primer POLYPRIMER HP 45 PRO | ⑩ Protective layer with gravel |
| ④ Vapour barrier | ⑪ Vertical turn-up with mineral membrane |
| ⑤ Insulation panel | ⑫ Outlet in 20/10 lead |
| ⑥ Bituminous membrane (1st layer) | ⑬ Outlet in 8/10 stainless steel |
| ⑦ Bituminous membrane (2nd layer) | |

05.03.2012

reproduction prohibited
without cite the source

POLYGLASS SpA - MAPEI GROUP - Registered Office: Viale E. Jenner, 4 20159 Milano
Head Office: via Dell'Artigianato, 34 31047 Ponte di Piave (TV)
tel. +39 04227547 - fax +39 0422854118 - www.polyglass.com e-mail: info@polyglass.it